

# THANK YOU!

We appreciate your continued support of Victory Programs' ReVision Urban Farm



During the 2022 season, your support has helped:

- Distribute, free of charge, approximately **1,500 lbs** of fresh produce.
- Distribute approximately **15,000 lbs** of fresh produce at affordable and fair prices.
- Keep our CSA prices at the same affordable rate for over ten years and running.
- Based off of seedling sales/donations and average poundage – you all have grown over **100,000 lbs** of ReVision-started produce. Unbelievable!

REVISION URBAN FARM

## 2023 SEEDLING CATALOG



**VICTORY PROGRAMS' REVISION URBAN FARM**

38 Fabyan Street, Dorchester, MA 02124

[SQUAREUP.COM/STORE/REVISIONFARMSEEDLINGS](https://squareup.com/store/revisionfarmseedlings)







# BENEFITS OF GARDENING

Outside of delicious vegetables, aromatic herbs, and colorful flowers, gardening has many other benefits:

- **Boosts Vitamin D levels** – higher calcium levels lead to increased bone strength and an immune system boost.
- **Decreased dementia risk** – a study found that gardening decreased the risk of dementia amongst those 60+ by 36%.
- **Mind-boosting benefits** – studies have proven that gardening leads to lower levels of the stress hormone, cortisol.
- **Physical activity** – yes, gardening is exercise. Bending, twisting, lifting, digging, pulling – are all a healthy physical outlet.
- **Helps combat loneliness** – gardening can help build community. Whether through sharing of resources and wisdom, or working together in a community garden – gardening is a great way to get out of the house and meet new people.

# RESOURCES & SEEDLING CARE

For more information on specific crops, please visit [johnnyseeds.com](http://johnnyseeds.com) & [rareseeds.com](http://rareseeds.com)

**NOFA/MASS (Northeast Organic Farming Association):** [nofamass.org](http://nofamass.org)

**UMASS-Amherst Soil Testing:** [umass.edu/soiltest](http://umass.edu/soiltest)

**Backyard Gardens:** Do you have space at your house, housing development, or apartment building for a garden? Through its “Build-a-Garden” program, The Food Project offers community residents the opportunity to grow their own food in containers and raised beds. For more information or to apply, visit <http://www.thefoodproject.org/build-a-garden> or call 617-442-1322 x12.

**Community Gardens:** No space to grow at home, or interested in growing alongside your neighbors? There are community gardens throughout Boston, including many run by The Trustees. More information can be found by visiting <https://thetrustees.org/place/boston-community-gardens/>.

# CONTENTS

## Perennials, \$3.25 per 4" Pot

**Black-Eyed Susan, *Indian Summer*** - Bright golden yellow petals with brown button center, 4-7" across, single and semi-double blooms. Height: 36-42".

**Delphinium, *Magic Fountains Mix*** - White and dark centers (bees) on cherry, lilac, lavender, dark blue, sky blue, and white. Magic Fountains' sturdy, compact plants will tolerate windy locations. Attracts bees and butterflies.

**Digitalis (Foxglove), *Camelot Cream*** - Blooms the first year from seed. Center spikes are large and full, and side shoots fill out the plant. Great for bouquets and gardens. Also known as purple foxglove.

**Echinacea, *Cheyenne Spirit*** - First-year flowering perennial in a stunning mix of colors. Bred for well-branched plants with more 3-4" flowers per plant. The vivid red, orange, purple, scarlet, cream, yellow, and white blooms can be used as cuts or as high-impact landscaping or container plants. Attracts and is a food source for bees. *Pictured right.*



**Echinacea, *Purpurea*** - Common purple coneflower. The easiest echinacea to grow — germinates without stratification. Vigorous plants with large, purple-petaled flowers. Fibrous roots are easy to harvest (other species have taproots). Attracts and is a food source for bees.

**Shasta Daisy** - Grow 24 – 36" tall and bursting with timeless 4" white-petaled daisies ideal for indoor planters or lining a flower bed, walkway, or fencing. Some of summer's most recognizable blooms and are a floral shop favorite for exciting fresh cut arrangements, baskets, and bouquets



**Yarrow, *Summer Pastels*** - Shades of sunny pastel blooms make excellent cut flowers and reliable perennial garden plants with decorative, fern-like foliage. As cut flowers, the 2-4", flat-topped flower heads on 24" stems add bulk, durability, and beauty to bouquets. *Pictured left.*

## About ReVision Urban Farm

- Seedling Sale Information
- How to Order
- Our Mission & History

## Vegetables & Fruits

- Brassicas
- Lettuce & Greens
- Squashes & Melons
- Eggplants
- Tomatoes
- Peppers
- Beets
- Alliums
- Beans
- Others

## Herbs

## Flowers

## Gardening Benefits & Resources

[squareup.com/store/revisionfarmseedlings](https://squareup.com/store/revisionfarmseedlings)



# ABOUT THE SEEDLING SALE

*We have selected our favorite varieties of vegetables, flowers, herbs, and fruits to get your garden off to a great start. Our seedlings are grown using only sustainable growing practices and natural fertilizers and pest controls. All our seeds are non-GMO and untreated.*

**Pre-Order Pick-Up Date:  
May 6th, 2023**

**We are only doing pre-order sales  
this year! If we have extra seedlings,  
we will open our greenhouse to  
community members and shoppers  
from 5/8-5/12**

*Online orders for individuals are due by  
April 24, 2023. Large commercial orders  
are due by March 31, 2023.*

*\*Pre-order pickup directions will be provided at a later  
date.\**



**Statice, *Formula Mix*** - Excellent uniformity. 1 1/2 - 3" flower clusters are produced on strong stems in the field and green-house. Color range includes blue, pastel blue, purple, white, and shades of yellow and rose. Ht. 24-30". *Pictured left.*

**Stock, *Katz Formula Mix*** – Early one-cut series with long stems. Performs well in spring, early summer, and fall. Good uniformity in bloom time and stem length. Comes in a rainbow of colors.

**Strawflower, *Sultane Mix*** - Tall, well-branched plants. Sultane Mix includes varying hues of pink, orange, purple, red, salmon, yellow, and white. Use for fresh-cut or dried flowers. Double blooms are 2-2 1/2" across.

**Sunflower, *Moulin Rouge*** – Exquisite, deep burgundy blooms. 3 – 6" flowers on side stems that are thinner, yet stronger than those of most other branching varieties.

**Sunflower, *Ring of Fire*** - Bi-color, yellow and maroon blooms. Excellent for bouquets. Branching variety. Height: 60-72".

**Sunflower, *Soraya*** - Branches average 20" and sport 4-6" blooms. May yield as many as 20-25 stems per plant. Height: 72".

**Sunflower, *Florenza*** – Unique color combination and mild chocolate fragrance. No drooping flower heads; strong, straight 15-32" stems provide firm support. Plants have relatively small, and few, leaves, making them more manageable, neater, and easier to harvest. Produces pollen. Branching. Ht. 45-55".

**Zinnia, *Benary's Giant Mix*** - Vigorous plants. Stunning mix of more than ten colors; dahlia-like blooms. Height: 40-50".

**Zinnia, *Queen Lime Blush*** – An innovative and elegant color combination, yielding mostly double and semidouble 2-3.5" blooms with a small percentage of singles. Yields multiple cuts over the season.



**Gomphrena, *Formula Mix*** - Productive accent flower for fresh and dried arrangements. 1 1/2" blooms in shades of purple, pink, and white. We have found the QIS™ (Quality in Seed) series to be the best choice for cut-flower production for its stem quality, length, and uniformity. Also known as globe amaranth and common globe amaranth. *Pictured left.*

**Gomphrena, *Strawberry Fields*** - Heirloom. Bright red 1.5" round bloom with strong stems. Height: 18-22".



**Larkspur, *Formula Mix*** - Features tall spires of dense florets. Mix includes: carmine, dark blue, light blue, light pink, lilac, rose, and white. Attracts hummingbirds. *Pictured left.*

**Marigold, *Durango Outback Mix*** - Mixed blooms of maroon, deep gold, yellow. Attracts beneficial insects. Height: 10-12".

**Marigold, *Giant Series*** - Tall, strong stems for cut flowers. Large flower heads, avg. 3", sit atop sturdy plants. These giant marigolds are prolific producers for cuts as well as excellent garden performers.

**Nasturtium, *Empress of India*** - Victorian era heirloom. Scarlet flowers stand out amid the dark blue-green foliage of this old-fashioned favorite. The compact, mounded plant habit makes it especially suitable for containers or as an edging plant. Also known as garden nasturtium and Indian cress.

**Nasturtium, *Jewel Mix*** - Mixed yellow, red, white and orange. Edible flowers and leaves.

**Nigella, *Love-In-The-Mist*** - Blue, mauve, pink, purple, and white blooms clothed in a lacy netting of greenery. Heirloom favorite for fresh or dried flowers. Balloon-shaped seed pods. Also known as devil in a bush.

**Scabiosa, *Pincushion Mix*** - Field-grown mix of black, blue, creamy yellow, pink, bright red, deep blue, rose hues, and pure white.

**Snapdragon, *Rocket Mix*** - Vigorous hybrid mix of ten colors. Height: 24-36".

## HOW TO ORDER

ReVision Urban Farm is committed to going **green**, which means we are no longer taking mail-in order forms.

To pre-order your seedlings, visit our Square Store at:

[squareup.com/store/revisionfarmseedlings](https://squareup.com/store/revisionfarmseedlings)

You can also order by using our QR code:



For further assistance:

**Call:** 617-822-FARM (3276)

**Email:** [farminfo@vpi.org](mailto:farminfo@vpi.org)

**Visit:** 38 Fabyan St., Dorchester, MA 02124



@revisionfarm



@ReVisionUrbanFarm

# ABOUT US

ReVision Urban Farm is an innovative, urban, micro-farm that grows produce, fruits, and herbs with environmentally regenerative methods. We provide access to affordable and nutritious food from our one acre farm to our community through our CSA, farm stand, and farmers' markets and to residents of our ReVision Family Home and local community fridges. In association with ReVision Family Home, we also provide job training for Boston youth and women experiencing homelessness.



## FLOWERS, ANNUALS, \$3.75 PER SIX-PACK

*\*With the exception of Dahlias sold in single pots\**

**Calendula, *Alpha*** - Large, bright-orange with resin content that's often used medicinally. Height: 24-30". *Pictured right.*



**Celosia, *Pampas Plume*** – Masses of soft, feathery, 2-6" long plumes. Multi-branching plant produces 10-14 stems each. Ht. 33-48".

**Cosmos, *Sensation Mix*** - Heirloom. Lavender, pink, magenta and white, delicate 3-4" flowers. A gardener's favorite. Height: 48-54".



**Dahlia, *Giant Hybrid Mix*** - Amazing long stems, lasting qualities, and tons of blooms. \*NOTE: Dahlias will not be sold in six-packs, but by individual 6.5" black nursery containers for **\$8.25 each**. *Pictured right.*



**Dianthus, *Volcano Mix*** - A tender perennial, but best grown as an annual. 2-4½" blooms have a sweet fragrance. Mixture includes shades of red, purple, pink, and coral. *Pictured left.*



# HISTORY OF REVISION



**Lavender, *Munstead Type*** – A strain of English lavender with a compact, bushy habit. Nice range of bloom colors, from pale blue to dark violet. Usually begins flowering in the second year. Hardy in zones 5-8. *Pictured left.*

**Lemon Balm, *Common*** - Distinct lemon flavor. Fresh leaves for tea and salads. Easy to grow.

Mulch if winter goes below 0°F/-18°C.

**Mint, *Mountain Mint*** - Mint flavor and aroma in abundance. White flowers attract bees, beneficial wasps, butterflies and other beneficial insects. Needs staking in windy locations. Used in potpourri, incense and as an ingredient in tea and natural insect repellent formulas.

**Oregano, *Greek*** - A true Greek oregano. Strong oregano aroma and flavor; great for pizza and Italian cooking. Characteristic dark green leaves with white flowers.

**Rosemary, *Upright*** - An annual herb that is typically grown for its edible qualities, although it does have ornamental merits as well. The fragrant grayish green needle-like leaves are usually harvested from early to mid-summer. The leaves have a sharp taste and a pungent fragrance.



**Sage, *Common*** - A staple of the herb garden. Wide variety of culinary uses. Dusty, green leaves are used in dressing, sauces, salted herbs, sausage, and tea. Make a good base for dried floral wreaths. *Pictured left.*

**Thyme, *German Winter***- The standard winter-hardy thyme with good flavor and yield. A classic culinary and ornamental herb. Small, round to

needle-shaped evergreen leaves and woody stems. Perennial in zones 5-8.

**Lemongrass, *East Indian*** - Aromatic grass from India. Essential oil contains large amounts of citral and geraniol, used for flavorings and perfumes. 6-12 stalks per plant, depending on growing climate.



ReVision Urban Farm began as a small garden in 1990 alongside a shelter for mothers that is now the ReVision Family Home. With the purchase of three abandoned lots across the street, a plot of land was reclaimed in the heart of the city to become what is now ReVision Urban farm.

Since 1990, the ReVision Family Home and the ReVision Urban Farm have given shelter and food to hundreds of families experiencing homelessness and provided healthy food options to thousands of people throughout the community.

In 2004, ReVision House and Victory Programs formed an alliance and the two organizations merged. Today, the ReVision Family Home and its companion ReVision Urban Farm are two of the dynamic and innovative programs under Victory Programs' umbrella of services.

# FRUITS & VEGETABLES, \$3.75 PER SIX-PACK

## Brassicas

**Broccoli, *Gypsy*** - Strong root system for plantings in below-average fertility. *Gypsy's* heads are well-domed and uniform with a medium-small bead size and medium-sized stem. Large, healthy plants have intermediate resistance to downy mildew and good heat tolerance. Suitable for bunching or crown cut.

**Broccoli Raab, *Spring Raab*** - Best for main-season crops. The most versatile broccoli raab variety for growing throughout the season - especially for spring and summer harvest, and overwintering in mild climates. Large plants mature over a 1-2 week period. Large, tender, abundant leaves borne on thin stems with delicate buds.



**Brussel Sprouts, *Dagan*** - Dependable midseason variety. Smooth, attractive, and holds very well in the field compared to others in this planting slot. Tall plants. Medium-large sprouts. *Pictured left.*

**Cabbage, *Tendersweet*** - Great flavor for fresh use or light cooking. Midsize, flat heads stand well without splitting. Tender leaves are very thin, sweet, and crisp — perfect for coleslaw or stir-fries. The leaves, used whole or cut into squares, are also suitable for wraps. Widely adapted for spring, summer, and early fall harvest.

**Cabbage, *Primero*** — Our first red cabbage offering! Heads are round to oval round, and average 1-3 lbs. Flavor is slightly sweet and peppery. May be planted at close spacing for mini-head production.

**Cauliflower, *Graffiti*** - Stunning, flashy purple heads. *Graffiti's* brilliant purple heads are a great draw at farm stands and excellent for CSAs and restaurants. The colorful florets are attractive served raw with dip or as a cooked vegetable. *Graffiti* produces a true cauliflower head on large plants. Best for fall harvest, but can also be sown in spring.

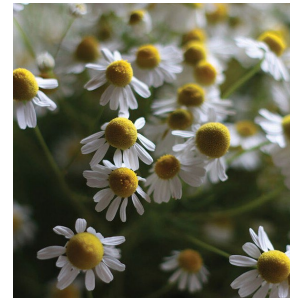
**Parsley, *Giant of Italy*** - The preferred culinary variety. Huge dark-green leaves with great flavor. Strong, upright stems make *Giant of Italy* one of the best parsleys for fresh market sales. Very high yielding. Ht. 18-20" *Pictured right.*



## Perennials, \$3.25 per 4" Pot

**Bee Balm, *Wild Bergamot*** - Bright lavender blooms with a spicy scent. Traditionally used by Native Americans to soothe bronchial complaints and ease colds. Plants produce flowers in the second year after planting.

**Borage, *Common*** - Edible flower with mild cucumber flavor. Large plants bear hundreds of small edible flowers, mostly blue and some pink. Long harvest period. Borage flowers attract bees and butterflies.



**Chamomile, *Common*** - Standard variety. Good yields of small, sweet-smelling, daisy-like flowers. Tea made from flowers aids digestion and acts as a gentle sleep inducer. Also known as German chamomile and Hungarian chamomile. *Pictured left.*

**Chives, *Dolores*** - Uniform, slender leaves for fresh use. Highly consistent upright habit with fine, dark green leaves. Ideal for gourmet use.

**Fennel, *Bronze*** - Gorgeous reddish-bronze color. Vigorous and uniform strain is slow to bolt. Non-bulbing type. Leaves are a nice addition to salads, coleslaws, and dressings.

**Garlic Chives / Chinese Leeks** - Thin, flat leaves with delicate garlic flavor. Attractive white flowers in midsummer, in the second year of growth. Flowers make a great addition to bouquets. The budded flower stalks are sold as "gow choy" in Chinese grocery stores. *Pictured right.*





# HERBS

Annuals, \$3.75 per six-pack



**Basil, *Red Rubin*** – Dark purple Italian large-leaf type. High yields and great flavor. Flat, 3” long leaves stand out horizontally and are a copper-tinged purple color. *Pictured left.*

**Basil, *Rutgers Devotion DMR*** - New from the Rutgers breeding program! Genovese type with a compact (but highly productive) plant habit. Leaves are large, cupped, and medium green.

Slightly sweet and spicy aroma. Strong downy mildew resistance.

**Basil, *Kapoor Tulsi (Holy Basil)*** - Native to tropical and subtropical Asia. It is the short, annual, heavily flowered plant that was originally introduced to the US as “Holy Basil” and it is the most common type found in cultivation in the US.

**Basil, *Everleaf Thai Tower***- New! Very slow bolting variety. Incredibly productive with vibrant Thai flavor. Plants are very upright with densely packed dark green leaves. A beautiful, tidy, towering plant great for bunching or growing in a container.

**Cilantro, *Santo*** - Standard cilantro. Santo is a slow-bolting selection grown for its leaves. Like the leaves and seeds, the flowers are also edible. Attracts Beneficial Insects: if allowed to flower, provides pollen and nectar for beneficial insects such as, bees, hoverflies, and tachinid flies.

**Dill, *Thalia*** – Slow-bolting dill for bunching and leaf harvest. Thalia is very similar to Hera, but is slower to bolt. Uniform habit and blue-green foliage. Wide, flat fronds. Ht. 36-48”. *Pictured right.*



**Cauliflower, *Snow Crown*** - This hybrid shows unusual seedling vigor. Good quality, medium-size heads whether harvested in summer or fall. Good tolerance to moderate fall frost. *Pictured right.*



**Collard Greens, *Flash*** – Very slow to bolt. Flash offers repeated harvests of dark green, smooth leaves. Very high yielding.

**Collard Greens, *Top Bunch*** - large, dark green, cabbage-like leaves retain eating quality for up to 2 weeks or longer.

**Pak Choi, *Joi Choi*** - Heavy, vigorous white-stem pak choi. Joi Choi forms a 12-15” tall, broad, heavy plant with dark green leaves and thick, flattened white petioles. Tolerant to heat and cold.

**Kale, *Black Magic*** – A well-maintained selection of Toscano kale with long, narrow leaves for attractive, tall, straight bunches. Dark blue-green leaves with beautiful savoy.

**Kale, *Darkibor*** - Organic, green, curly kale. Similar to Winterbor, Darkibor is not quite as tall, somewhat later to mature, and slightly less curled. The color is more of a medium green versus the darker and bluer green colors of Winterbor and Starbor.



**Kale, *Redbor*** - Frilly deep purple-red leaves. Similar to Winterbor in everything but color. For garnishing and eating. Flavor, color, and curling are enhanced by cold weather. *Pictured left.*

**Kohlrabi, *Kolribi*** - The most attractive and uniform purple variety. 3” bulbs with uniform, deep purple skin, and nearly fiberless, crisp, white flesh. *Pictured right.*



## Lettuces & Greens \$3.75 per six-pack

**Callaloo, *RUF Jamaican Seedling*** - Ancient green leafy vegetable also known as amaranth; it has been consumed for thousands of years. Most often used in a traditional Jamaican dish. *Pictured right.*



**Lettuce, *Nancy*** – Traditional Boston-type. Medium green leaves that are unusually thick and crisp. Large, well-packed heart has excellent butterhead qualities. Slow to rot bottom. *Pictured left.*

**Lettuce, *Green Forest*** - Early, tall, and dark green. Green Forest is slow-bolting and has smooth ribs so it packs and handles with little damage. A good performer for field or greenhouse production in conventional and hydroponic systems. Tolerant to tip burn, intermediate resistance to corky root.

**Lettuce, *Cegolaine*** - Bronze red little Gem-type for spring, summer, and fall. Very uniform, dense heads are slow to bolt. Great flavor. Pairs nicely with Rosaine and Newham for an attractive contrast between red and green. High resistance to downy mildew. *Pictured right.*



**Lettuce, *Nevada*** - Bright green leaves form dense, closed heads. Resists tip burn, bottom rot, and bolting, and its great flavor stays mild. Heavy heads. Spring and summer crops.

**Spinach, *Flamingo*** - Uniform, smooth, medium-green leaves on very long stems. A great choice for bunching. High resistance to downy mildew.

## Others, \$3.75 per six-pack

**Fennel, *Orazio*** - Large, thick, rounded bulbs. Crisp and flavorful with a nice anise flavor. Highly uniform. Due to its heavier bulbs, Orazio has a higher yield potential than flatter, open-pollinated fennels. Suitable for late summer and early fall harvest in most areas. It also can be transplanted in January for an April harvest in areas with mild winters, such as coastal California.

**Okra, *Carmine Splendor*** – Stout 5-pointed pods. Deep red when small, lighter red/pink when larger. Mid- to late-summer harvest.

**Okra, *Jambalaya*** - Early, high-yielding, dark green pods. Very uniform pods with 5 points. Large, robust flowers are also edible. Makes a great ornamental in containers. *Pictured right.*



**Celery, *Tango*** - Vigorous, organic celery. Tango is as adaptable as Conquistador, but the flavor is better and the stalks are more tender and less fibrous. The plant is also a few inches taller. Tango performs well under less than ideal growing conditions such as heat or moisture stress.

**Celeriac, *Brilliant*** – Medium-large, round, and relatively smooth roots with buff-colored skin. Interiors are white and flavorful, and resist pithiness and hollow heart.

**Artichoke, *Tavor*** – An improved Imperial Star-type for low-input systems that features minimal spines for easier harvesting. The 2-3' plants have an open habit and produce an average of 1-2 primary buds per plant averaging about 3-4" in diameter.

**Corn, *Temptress*** - Follow 'Sweetness' with this exceptional synergistic. Temptress combines premium eating quality and reliable field performance, thanks to strong seedling vigor, good husk protection, and a broad disease resistance. Also a good "rain gap" option, Temptress can be slotted for a quick crop later in the season, without risk of blowing out the tip.

**Rhubarb, *Victoria*** – An early and abundant producer. Well-adapted to most regions and is widely grown commercially. The large, tender stalks are sweeter and milder than other rhubarb varieties.



# Alliums, \$3.75 per six-pack

**Leek, *King Richard*** – Beautiful full-sized leeks. In favorable soil and culture, the white shanks are over a foot long to the first leaf. Medium-green leaves with full habit. For baby leeks, plant closely and harvest at finger size.

**Onion, *Red Long of Tropea*** - Tall, elongated, red bulbs. Traditionally grown in Mediterranean Italy and France for harvest just at maturity in mid-late summer. For bunching or fresh use, not for storage. Nice specialty variety.

**Onion, *Walla Walla Sweet*** - The famous, mild yellow variety from Walla Walla, WA. Juicy, sweet, regional favorite. This globe-shaped onion is exceptionally mild and makes jumbo- to colossal-sized bulbs with light brown skin and pretty white flesh. Sweetest of all the long-day varieties, it is the only long-day that comes close to matching the sweetness of Georgia Sweet. Exceptionally mild flavor. Will keep for a month.

**Scallion, *Deep Purple*** - Deep red-purple. The first red buncher that is highly colored at any temperature. For spring or summer sowing.

## Beans

**Bean, *Trilogy*** - A delightful mix of green, yellow, and purple bush beans. This mix of Provider, Royal Burgundy and Rocdor is perfect for the gardener with limited space. *Pictured right.*

**Bean, *Provider*** - Earliest to market. Provider can be planted earlier than other beans because it germinates well in cool soils. Compact plants are easy to grow and adaptable to diverse soil and climate conditions. Produces 5 1/2" fleshy, round pod green beans.

**Bean, *Red Noodle*** – High yielding, burgundy bean. 16 – 20" beans are grown in clusters of up to four beans each. Healthy, vigorous plants.



**Swiss Chard, *Bright Lights*** - The gold standard for multicolored Swiss chard. Lightly savoyed green or bronze leaves with stems of gold, pink, orange, purple, red, and white with bright and pastel variations. Consistent growth rate and strong bolt resistance across all colors makes this a superior mix. Direct seed or transplant to allow separating out the individual colors. Suitable for production year round, but somewhat less frost hardy than normal for chard. *Pictured left.*

## Melons, Squashes, & Gourds, \$3.75 per six-pack

**Melon, Cantaloupe, *Sarah's Choice*** - Our most flavorful cantaloupe. Sarah's Choice's sweet and juicy flesh has consistently been a winner in our trials. Its flavor, combined with its attractive oval fruits and ideal 3-lb. size, make it the best variety for retail sales.

**Melon, Honeydew, *Honey Blonde*** – Not your typical honeydew, Honey Blonde has attractive yellow skin and sweet, orange flesh. The oval fruits avg. 3 - 3 1/2 lb. Plants are strong and vigorous and perform well in warm or cool weather.



**Melon, Watermelon, *Sugar Baby*** - The standard of small watermelons. Round fruits, 6–8" in diameter, averaging 8–10 lb. Ripe melons are almost black. Good flavor. Tough rinds resist cracking. The standard of "icebox" melons for many years. *Pictured left.*

**Cucumber, *Little Leaf Pickling*** - Blocky, medium-length (3–5") fruits are good for fresh eating. They pickle well and have a distinctive, bright emerald green color. Vines are compact, multi branching, and yield well even under stress. Half normal-sized leaves provide easy visibility and harvesting.

**Cucumber, *Marketmore*** - Popular variety. Long, slender, dark green cucumbers. The slender, refined "Marketmore look" has long been the standard for slicing cucumbers in the North. 8–9" fruits stay uniformly dark green even under weather stress. Begins bearing late, but picks for a relatively long time.

**Cucumber, *Mexican Sour Gherkin*** - A unique specialty cucumber. Cute, 1" long fruits look like miniature watermelons and taste like cucumbers with tangy citrus overtones. Vines start growing slowly but can get up to 10' long. Can be eaten fresh or pickled. Also known as the Cucamelon and mouse melon. Not particularly high yielding. Trellising recommended. NOTE: We recommend harvesting these cucumbers promptly as they tend to get seedy if allowed to grow longer than 1". *Pictured right.*



**Cucumber, *Painted Serpent*** – Unusual, slightly fuzzy, serpentine fruits are slightly ridged with alternating dark and light stripes. Technically a member of the melon family. To be harvested from 8-18". Delicious.

**Pumpkin, *Racer*** - Extra-early workhorse variety. Blocky, midsize pumpkin with a great-looking rib and big, dark green handle. Typical weight 12-16 lb. highly productive, vigorous, short vine.

**Pumpkin, *North Georgia Candy Roaster*** - Rare heirloom variety. Originally cultivated by the Cherokee tribe in the Appalachian Mountains of the southeastern portion of the United States. It is still most often grown in parts of northern Georgia, North Carolina, and Tennessee. Taste is smooth and sweet. Becomes sweeter with time. *Pictured right.*



**Winter Squash, *Black Futsu*** – A beloved Japanese delicacy! A traditional favorite with bumpy skin that develops an enchanting gray-to-bush cloudy "bloom" on the surface. Firm, bright orange flesh with a nutty, fruity flavor. Skin is thin and edible, so there's no need to peel! *Pictured Left*

**Acorn Squash, *Honeybear*** - Delicious small acorn. Just right for single servings when halved. Worthy of marketing by name. Semi bush plant. Bred by Dr. Brent Loy at UNH to fulfill his career-long ambition to improve acorn squash flavor. Intermediate resistance to powdery mildew. Avg. weight: 1–1 1/4 lb. Avg. yield: 3–4 fruits/plant.

## Beets, \$3.75 per six-pack

**Beet, *Avalanche*** – Mild and sweet white beet. A delicious white beet that won't leave red stains. Produces consistently large, round roots with clean and vigorous tops.

**Beet, *Chioggia Guardsmark*** - Improved strain of Chioggia. Pink and white "candy-stripe" roots with medium-height green tops. Excellent flavor. The highest quality Chioggia strain available. *Pictured right.*



**Beet, *Red Ace*** - Workhorse standard red beet. Reliable, adaptable, and fast-maturing beet with strong tops. Sweet and tender, even when older. Medium-tall, red-veined greens for bunching. *Pictured left.*



**Beet, *Touchstone Gold*** - Striking golden-fleshed beet. Smooth, golden roots with bright yellow flesh retain their color when cooked. Excellent, sweet flavor. Leaves and



petioles are green. Very good germination for a golden beet. *Pictured right.*



**Pepper, *Padron*** - Famous Spanish heirloom. Named after the town where they originated. Harvest Padron peppers when they are 1-1 1/2" long. About 1 out of 20 fruits will be hot, and the rest mild. All the fruits become hot if allowed to grow 2-3" long. Padrons are served sautéed in olive oil with a little sea salt, and eaten as tapas (appetizers) in Spain.

**Pepper, *Shishito, Mellow Star*** - Japanese shishito pepper for cooking or salads. Avg. 3 1/2-4" heavily wrinkled fruits are thin walled, mild (no heat) when green and slightly sweet when red. Popular in Japan where it's thin walls make it particularly suitable for tempura. Also very good in stir fries or sautés. In Asia, fruits are always cooked green but they also may be used red. Thinly sliced, the red fruits are excellent in salads and coleslaw. Large, upright plants produce good yields over an extended harvest period. *Pictured right.*



**Pepper, *Yellow Seven Pot*** - A most dangerously deceptive piece of eye candy. Cheerful canary yellow peppers are highly ornamental, lending a tropical feel to the edible landscape. Wise gardeners know not to turn their backs on this attractive fruit. The Yellow Seven Pot pepper from Trinidad ranks as one of the world's hottest peppers, with over 1 million on the Scoville scale!

**Pepper, *Hungarian Hot Wax*** - Widely adapted and productive, even in cool weather. Yellow hot pepper with 5 1/2" x 1 1/2" smooth, waxy fruits tapering to a point. Easy to stuff and to peel after roasting; thick-fleshed for frying. Its sunset-ripening peppers change from yellow to orange to red, and make the prettiest pickled peppers.



**Pepper, *Thai Red Chili*** – Fiery little red, pointed peppers are popular in Thailand for flavoring many dishes. Loads of fruit are produced late on tall, bush plants. The flesh is thin, making these great for drying for winter use. *Pictured left.*

**Pepper, *Scotch Bonnet*** - An heirloom treasure from Jamaica, this pepper is fruity and full bodied, providing the backbone of countless Caribbean delicacies. Named for the unique shaped fruits which resemble famous "tam o shanter" Scottish hat.

**Butternut Squash, *Waltham*** - Still the benchmark for large butternuts. Larger fruits with small seed cavities and thick, straight, cylindrical necks. Flesh has smooth texture and sweet flavor, particularly after 2 months of storage. This 1970 All-America Selections winner from Massachusetts is still deservedly the most widely grown, full-size OP butternut. Fruits avg. 9" long. Avg. weight: 4-5 lb. Avg. yield: 4-5 fruits/plant. *Pictured right.*



**Summer Squash, *Lemon Sun*** – Replacing sunburst, this is a yellow patty pan with high yields. Attractive, whether picked tiny with the blossom still attached, or teacup-size. Vigorous plants pump out butter-yellow scalloped fruits with bright green blossom ends.

**Summer Squash, *Multipik*** - Precocious, yellow straight neck. Rich, yellow fruits with a medium bulb. Vigorous bush plants have a high yield potential and long harvest period.

**Winter Squash, *Delicata, Jester*** - Superb flavor in an eye-catching fruit. Among the very best in eating-quality. Oval and tapered at both ends, Jester's distinguishing feature is splashy green, inter-rib striping that contrasts nicely with the ivory background. High yielding and widely adapted. Short vines. Avg. weight: 1 1/2 lb. Avg. yield: 5-7 fruits/plant. *Pictured right.*



**Summer Squash, *Yellow Crookneck*** – A garden favorite. This traditional variety is well known for its buttery flavor and firm texture. Big plants are late to begin bearing, but then yield consistently over a long picking period.

**Zucchini, *Golden Glory*** – Spineless, yellow zucchini with excellent yields. Excellent disease resistance allows for high yields.

**Zucchini, *Magda*** - Sweet, nutty flavor. Blocky, pale-green fruits can be used for stuffing, stir-fries and pickling. High-yielding over a long season.

**Zucchini, *Costata Romanesco*** – A traditional Italian heirloom with great flavor. This distinctive zucchini is medium gray-green, with pale green flecks and prominent ribs. Nutty and delicious, raw or cooked. Also a good producer of heavy male blossoms for cooking.

**Zucchini, *Dunja*** - Organic, early, powdery mildew resistant. Dunja is a high yielder of dark-green, straight zucchinis. Open plants and short spines make for an easy harvest.

## Eggplants, \$3.75 per six-pack



**Eggplant, *Barbarella*** - Dark purple Italian type with white halo. Tender fruits are nearly round, 4-5" long by 4-6" diameter, with some small spines. Good yields with excellent flavor. Uniform with a medium gloss. Pictured left.

**Eggplant, *Galine*** - High-yielding Black Bell type. Very glossy, uniform, black to purple fruits are 6-7" long by 3-4" in diameter. Strong plants produce early, firm fruits. High yielding, even in the North.

**Eggplant, *Orient Express*** - The most dependable eggplant. High-yielding plants produce armloads of attractive, slender, and glossy fruits 8-10" long by 1 1/2-2 1/2" diameter. Ready up to 2 weeks before other early varieties and sets fruit in cool weather and under heat stress. Tender, delicately flavored, and quick cooking. Has a tendency towards slow emergence, and may need more time to germinate than other eggplant varieties. *Pictured right.*



**Eggplant, *Fairy Tale*** – Purple and white mini-eggplant. Attractive 2-4" fruits grow abundantly on 18-24" plants. Wonderful flavor with no bitterness. Some fruits may be harvested in clusters. *Pictured left.*

## Hot Peppers, \$2.75 per 4" pot

**Pepper, Poblano, *Baron*** - Highly adaptable, large-fruited poblano pepper. Baron has proven to produce better than other poblanos under challenging and favorable conditions. The fruits are very large, avg. 5" x 3", and are typically two-lobed which makes them easy to stuff and cook in their signature dish, chile rellenos. *Pictured left.*



**Pepper, *Habanero*** - Extraordinary heat combined with fruity, citrus notes. Avg. 2" x 1 1/4", wrinkled fruits ripen from dark green to salmon orange. This extremely pungent habanero may be used fresh or dried. Key ingredient in Jamaican "jerk" sauces. Yield potential is good, but can be erratic in the North.

**Pepper, Jalapeño, *Jedi*** - High yielding, continuous set type. The largest jalapeño offering, Jedi's fruits avg. 4-4 1/2" and are slow to check (show small cracks in skin). The large plant is of the "continuous set" type that produces over a long harvest window, especially in regions with a long growing season. The variety with the highest potential yield.

**Pepper, Cayenne, *Red Rocket*** - The most versatile and flavorful cayenne we offer. Tremendous flavor on first bite, with warm heat that lingers. Makes excellent powder, flakes, and hot sauce. Also nice fried or in stir fries. Matures early. High-yielding plants. Fruits avg. 4-4 1/2" long. *Pictured right.*



**Pepper, Serrano, *Impala*** - High-yielding serrano. Impala is a traditional serrano with avg. 3" fruits borne on big plants over a long harvest period. The dark green fruits are traditionally eaten green but also make fine chipotles if allowed to ripen to red.

*Looking for something with more of a kick? Give us a call!*



# Peppers

## Sweet Peppers, \$3.75 per six-pack



**Pepper, Sweet, *Ace*** - Extra-early, highly productive standard. Huge yields of medium sized 3-4 lobed fruits. Has apparent tolerance to blossom drop as nearly every flower produces a pepper. Widely adapted but performs particularly well in cool climates where bell peppers are difficult to grow successfully. Best for early crops and particularly good for pack sales. *Pictured left.*

**Pepper, Sweet, *Islander*** - Light lavender skin, pale yellow flesh. 3-lobed, medium-size, thick-fleshed bell peppers with a mild, slightly sweet taste. Fruits ripen through a showy stage of violet, yellow, and orange streaks, eventually turning a rich, very dark red. Strong, medium-tall plants yield well. *Pictured right.*



**Pepper, Sweet, *Yankee Bell*** – Red when fully mature. Blocky, 3-4 lobed fruits are medium sized. Great quality and uniformity. Medium large plant. *Pictured below.*



## Tomatoes & Tomatillos, \$3.75 per six-pack

Single Plant (Hybrid & Heirloom Only): \$2.25

Tomato Variety Packs, \$4.75

### Cherry Variety Pack:

2 each of: Sun Gold, Supersweet 100, Black Cherry

### Heirloom Variety Pack:

2 each of: Striped German, Brandywine, Cherokee Green

### Hybrid Variety Pack:

2 each of: Big Beef, New Girl, Chef's Orange Choice

**Tomato, Hybrid, *Big Beef*** - Nice combination of size, taste, and earliness. Still unsurpassed as the top choice for fresh market beefsteak tomatoes. Large, avg. 10-12 oz., mostly blemish-free, globe-shaped red fruit. They have full flavor - among the best - and ripen early for their size. Broad disease resistance package.

**Tomato, Heirloom, *Brandywine*** - One of the best tasting tomatoes. The large fruits, often over 1 lb., have a deep pink skin and smooth, red flesh. The medium-tall, potato-leaf plant is best staked or caged.

**Tomato, Heirloom, *Cherokee Green*** - Unique color, great flavor. Medium-size 8+ oz. green fruits acquire some yellowish-orange color on the blossom end when ripe. Lots of bold, acidic, complex tomato flavor. *Pictured right.*



### Tomato, Hybrid, *Chef's Orange Choice* -

Attractive, orange beef- steak. 8-11 oz. fruits are low in acid and have very good flavor and texture. High yielding. Earlier and more productive than most orange beefsteaks.

**Tomato, Hybrid, *New Girl*** - Produces medium sized 4 to 6 ounce fruits nice and early in the season. But New Girl is better tasting and more disease resistant than Early Girl, with excellent flavor. Perfect size for those who hate cutting into a large tomato knowing they won't be able to eat the whole thing.

**Tomato, Heirloom, *Striped German*** - Bicolor red and yellow fruit. The flat, medium to large tomatoes with variable shoulder ribbing are shaded yellow and red. The marbled interior looks beautiful sliced. Complex, fruity flavor and smooth texture. Medium-tall vines bear 12+ oz. fruit.



**Tomato, Heirloom, Valencia** - Sunny orange fruits with full tomato flavor. Round, smooth fruits average 8-10 oz. Their meaty interiors have few seeds. This midseason tomato is among the best for flavor and texture. *Pictured left.*

**Tomato, Speckled Roman** - Striking red sauce tomato with yellow streaks. Speckled Roman is an elongated plum tomato, avg. 6-8 oz., with bright red skin and golden streaks. Meaty red flesh has little juice, is good for fresh eating, and cooks quickly into sauce. Excellent flavor.

**Tomato, Heirloom, Black Beauty** - A dark, meaty, very rich-fleshed tomato with extreme anthocyanin expression (same antioxidant in blueberries and blackberries). So dark that some tomatoes turn solid blue-black on the skin. Deep red flesh is among the best tasting of all tomatoes. Rich, smooth and savory with earthy tones. Hangs well on the vine and stores very well, and the flavor improves with room-temperature storage. *Pictured right.*



**Tomato, Hybrid, Pink Wonder** - Heirloom-type pink greenhouse tomato. 6-10 oz. tomatoes with excellent flavor and smooth texture on large clusters. For larger fruit size, prune to 3-4 fruit per cluster. Soft flesh and thin skin improves flavor but requires even watering to prevent cracking. Good vigor, yield, and disease resistance. Heirloom-quality flavor and appearance.

**Tomato, Cherry, Black Cherry** - Sweet and robust. Bred in Florida by the late Vince Sapp, the round, 15–20 gm. fruits are almost black in color. The flavor is dynamic — much like an heirloom. High yielding.



**Tomato, Cherry, Sun Gold** - Intense, fruity flavor. Exception- ally sweet, bright tangerine-orange cherry tomatoes leave everyone begging for more. Vigorous plants start yielding early and bear right through the season. Tendency to split precludes shipping, making these an exclusively fresh-market treat. The taste can't be beat. 15-20 gm. fruits. *Pictured left.*

**Tomato, Cherry, Supersweet** - The classic sweet, red cherry tomato. Supersweet 100 is a reliable cherry tomato with prolific yields of great tasting, 15-20 gm. fruits produced in large clusters. Widely adapted.

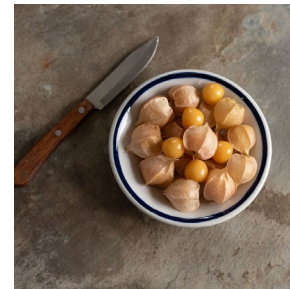
**Tomato, Cherry, Pink Bumble Bee** – Pink cherry streaked with gold. Excelletn sweet flavor. Pink Bumble Bee is an alluring combination of light pinks, yellows, and oranges. Bred with high vigor to perform under tough conditions. *Pictured right.*



**Tomato, Cherry, Brad's Atomic Grape** - These elongated, multi-colored, large cherries grow in clusters. Lavender and purple striped when immature, turning to green, red / brown with anthocyanin blue stripes when fully ripe. The interior is green with a blushed red when extra ripe. This amazing variety is delicately sweet. The fruit holds well on the vine and post-harvest. The foliage is wispy, but produces a lot of fruit.

**Tomato, Cherry, Yellow Pear** – Very sweet, 1.5" yellow, pear-shaped fruit. Great for fresh eating off the vine, or for making tomato preserves. Highly productive plants are easy to grow

**Tomatillo, Toma Verde** - Early green tomatillo. Early-maturing, large, flat-round green fruits. Use in salsa or Mexican cooking.



**Husk Cherry, Goldie** - Small, orange berry with a husk. A conversation piece at markets, well-liked by children. This old-fashioned tomato family member bears 1/2– 3/4" sweet golden berries inside papery husks, resembling small, straw-colored Japanese lanterns. The flavor is quite sweet and a bit wild. Plants are profusely branching, prolific, and drop ripe fruits. Fruits can be eaten raw, dried like raisins, frozen, canned, or made into preserves, cooked pies, and desserts. *Pictured left.*